

*In today's complex globalized world, the need to adapt to a fast paced and constantly changing world has become vital for the business decision makers of tomorrow. At the Schulich School of Business, with its globally recognized MBA and economics specialization, the **Schulich Economics and Policy Association (SEPA)** is the first club that provides graduate students not only the opportunity to explore professional and academic economics, but a conduit for prospective business decision makers to explore the opportunities available to them through the understanding of economic principles and problems.*

SCHULICH ECONOMICS AND POLICY ASSOCIATION (SEPA)

CONSTITUTION

Mission

The mission of SEPA is to offer Schulich graduate students the prospect to explore the myriad of career opportunities available through the diverse discipline of economics, strengthen Schulich's reputation in the business world, and to provide students a medium to network with economics professionals and leading business decision makers.

In order to carry out this mission, the club shall:

1. Leverage the Schulich School of Business's faculty to participate in a roundtable discussion each semester, to discuss the impact of economic policy on today's graduates and, in turn, the value of Schulich's economics specialization.
2. Bring together MBA students who share an interest in economics related fields—including professional and academic economist, government analyst, consultant, vice-president planning, chief executive officer, investment banking partner / analyst, venture capitalist, management consultant, and other related professions—through the organization and management of meetings, activities and events that will provide students a medium to network with peers, economics professionals, and leading business decision makers.
3. Strengthen relationships with Schulich alumni, through the Office of Alumni Relations, and networks in order to reinforce interaction between students and top professionals.
4. Utilize the expertise of the Schulich Career Development Centre to provide students with the tools and strategies required to secure economics related career opportunities.

Membership

Membership in SEPA is offered to all Schulich School of Business graduate students, encompassing MBA, MBA/LLB, MBA/MFA, York/Laval, EMBA, IMBA and MPA.

Fees

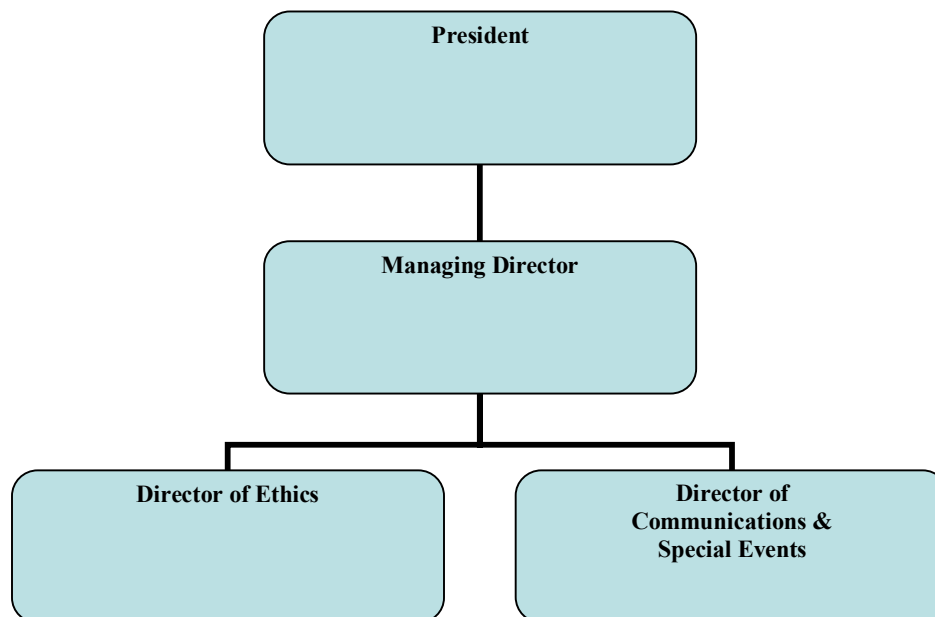
Membership to SEPA entails an annual membership fee of \$15.

Meetings

The executive committee of SEPA shall meet at minimum bi-monthly, at time and location decided.

Executive Committee

The executive committee of SEPA shall include the following officers and club hierarchy:



Executive Member Duties

President

Undertake networking opportunities in order to develop professional relationships that expand the reach and reputation of SEPA within the business world

Carry out networking opportunities to identify career development prospects, potential events, and speakers for SEPA; in order to advance club development

Maintain and build associations with Schulich faculty and clubs to expand the career development opportunities of club members

Manage and direct executive committee and all meetings

Undertake necessary communication with the Graduate Business Council

Approve all SEPA budgets, spending, and planning

Approve all SEPA financial documents

Principal Liaison with the faculty advisor

Identify opportunities for corporate sponsorship of the club

Identify opportunities to maintain and build the Schulich School of Business's reputation within the business world

Develop succession plan for the club to ensure future growth and success

Appoint all officers

Managing Director

Identify opportunities for expansion of club membership

Represent SEPA at all club fairs

Identify and follow through on corporate sponsorship and club development opportunities

In the absence of the president, undertake presidential duties

Director of Ethics

Prepare and submit all compliance forms

Manage compliance information on grants and funding

Direct integrity issues

Support formation of proposals and budgets

Oversee corporate sponsorship practices

Director of Communications & Special Events

Maintain all communication and correspondence with members

Plan, organize and execute all SEPA activities and events

Record and maintain all meeting minutes

Selection of Officers

The club officers shall be chosen by the president when deemed necessary. It is the responsibility of the president to develop a succession plan to ensure future growth and success of the club. Upon the end of the president's term, a new president shall be selected by the retiring president

The selection of officers shall be based on:

Business work experience

Capacity to commit at minimum 5 hours per week towards the club

Entrepreneurial, communication and leadership capabilities

Amendments

The SEPA constitution may be amended, as required, by the president; with approval of the faculty advisor